

1615 S. COMBEE ROAD – LAKELAND, FL



Wholesale / Retail Warehouse

Near US 98 South & 1 mile to Polk Parkway (570)

**NEED WAREHOUSE
SPACE? Call
THE RUTHVENS
(863) 686-3173**

Excellent location for a small distribution company. Great showroom with warehouse attached. 11 overhead doors at multiple heights. High traffic count area. Fast access to Highway 98, 92, Interstate 4 and Polk Parkway (570)

Specifications

- 5,250 sq. ft. building
- Metal with concrete block end walls
- 11 overhead doors: 1-10' x 8' & 10 - 10' x 7'4"
- 16' eave height
- 5" reinforced floor
- Ample truck parking & turning radius
- High traffic count area

For More Information Contact:

Greg Ruthven, CCIM
(863) 581-4639 cell
greg@ruthvens.com

Matt Ruthven, CCIM
(863) 581-4637 cell
mruthven@ruthvens.com

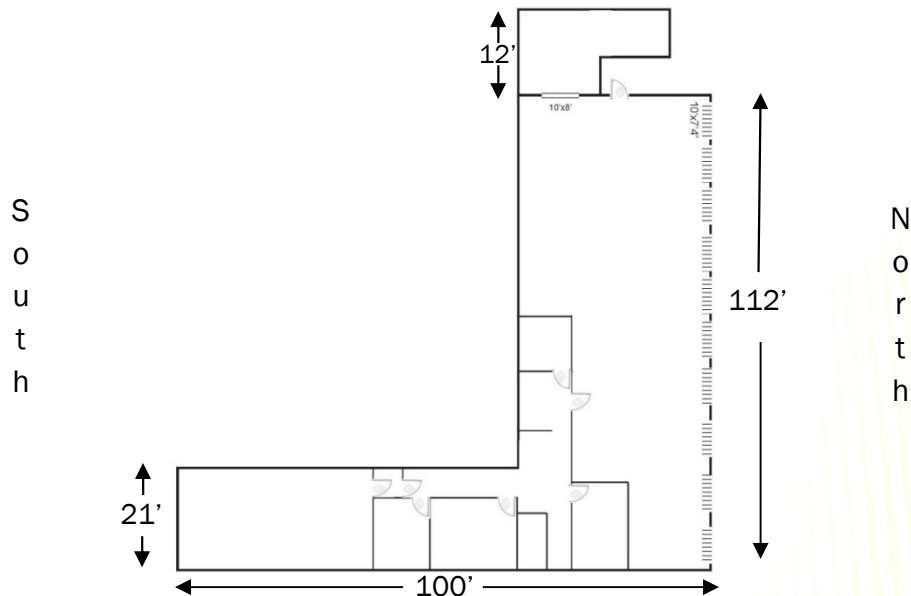
41 Lake Morton Drive . P.O. Box 2420 Lakeland, FL
33806-2420

www.Ruthvens.com

**THE
Ruthvens**
*Leasing Warehouse Space for
Distribution & Manufacturing*

1615 S. COMBEE ROAD – LAKELAND, FL

We build more than warehouses.. We build relationships!



WHOLESALE / RETAIL WAREHOUSE

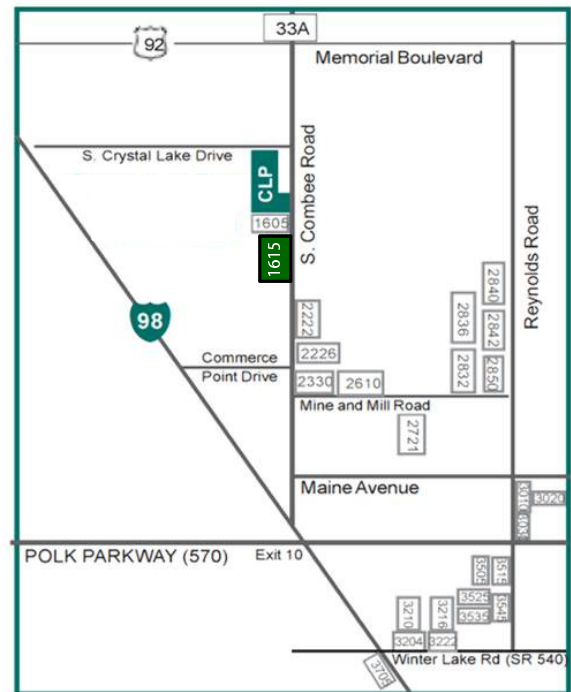
- Over 9½ million people live within a 100-mile radius of Lakeland
- Approximately 1 mile from Polk Parkway (570), Exit 10 full interchange
- Fast access to Highways 98, 92 and Interstate 4

Call Today!
863-686-3173

www.Ruthvens.com

THE Ruthvens

*Leasing Warehouse Space for
Distribution & Manufacturing*



Greg Ruthven, CCIM: greg@ruthvens.com - Matt Ruthven, CCIM: mruthven@ruthvens.com
Mobile: (863) 581-4639 Mobile: (863) 581-4637